

OPERATION AND MAINTENANCE MANUAL



MODEL 101

Insta[®]
PUT IT ON![®]

HEAT SEAL MACHINES

INSTA GRAPHIC SYSTEMS

FOR USE BY QUALIFIED PERSONNEL ONLY

Safety Summary



WARNING

In case of power cord damage, do not attempt to repair or replace the power cord. Contact the manufacturer or the local distributor.



CAUTION

Hot surface. Avoid contact.



CAUTION

During normal operation, the base of the machine needs to be installed or placed above the wall socket.



CAUTION

The machine is to be operated by one person only.



WARNING

To reduce the risk of electric shock and injury to persons, disconnect from power supply before servicing and/or cleaning.



CAUTION

The temperature adjustment knob gets very hot during operation. Adjust only when machine is cold.

International Symbols



Power Off



Power On



Hot Surface



Risk of Electrical Shock



Protective Earth Terminal



Ground





Caution - Warning

FOR USE BY QUALIFIED PERSONNEL ONLY

Congratulations!

Your selection of the Insta Graphic Systems heat seal machine is a sound business decision. Insta equipment is the result of the highest quality engineering and time-tested design. Your new machine combined with Insta's reputation of innovation in the heat-seal industry, insures the continuing capability of delivering the best-decorated substrates possible.

This manual describes installation, operation, and maintenance procedures for your new model 101  machine.

Your model 101  machine will have a long trouble-free life. Read this manual. Keep it with your machine; it's your key to proper operation and lasting service.

Installation



DOMESTIC

Use a 15 amp AC circuit. Only industrial weight extension cords with proper wire size should be used: size 16/3 wire for distances up to 25 feet, and size 14/3 for distances up to 50 feet.



INTERNATIONAL

Only industrial extension cords with proper wire size (2.5 mm sq.) shall be used.



IMPORTANT

The appliance must be plugged into a proper receptacle of the proper size and rating. Equally important, the line voltage must be able to accommodate this appliance as well as *other appliances operating on this circuit.*

Specifications

Voltage	120 Volts AC	50/60 Hertz
Model 101	1200 Watts	10.0 Amps

Voltage	230 Volts AC	50/60 Hertz
Model 101	1200 Watts	5.2 Amps

Weight Model 101	29 Pounds (13.2 KG)
------------------	---------------------

Limited Machine Warranty

Insta Graphic Systems warrants this heat seal machine, when operated under normal conditions, to be free from manufacturing defects in material and workmanship for a period of one year on parts (lifetime on the upper heating element) and 90 days on labor from the invoice date.

This warranty will be effective only when Insta authorizes the original purchaser to return the product to the factory in Cerritos, California freight prepaid, and only when the product upon examination has proven to be defective.

This warranty does not apply to any machine that has been subjected to misuse, negligence or accident.

Insta shall not be liable for the injury, loss or damage, direct or consequential, arising out of the use or the inability to use the product.

No claim of any kind shall be greater in amount than the sale price of the product or part to which claim is made.

This is the sole warranty given by the company, it is in lieu of any other warranties, expressed or implied, in law or in fact, including the warranties of merchantability and fitness for a particular use, and is accepted as such by the purchaser in taking delivery of this product.

Operation

1. Push ON/OFF switch to ON position. Set desired temperature and lift handle so that the upper platen arm is away from lower platen.



CAUTION

The temperature adjustment knob gets very hot during operation. Adjust only when machine is cold.

2. Allow the machine to warm up for approximately 20 minutes. When the selected temperature is reached, the neon lamp on the power switch will cycle on and off.
3. Set the desired pressure by adjusting the pressure adjust knob on the top-center of the machine. To reduce pressure, turn knob clockwise.
4. Place the substrate on lower platen. Smooth out all wrinkles.

FOR USE BY QUALIFIED PERSONNEL ONLY

5. Position transfer or lettering on substrate.
6. Close machine by pulling handle down into locked position.
7. At end of the time cycle. Pull handle up **slowly** and move the upper platen handle to its full open position. This technique will avoid transfer paper (cover) from being pulled off prematurely due to suction from the separating platens.

Preventive Maintenance Suggestions

The Insta heat seal machines are relatively maintenance free. For a long, trouble-free life, the following preventive maintenance steps should be followed:

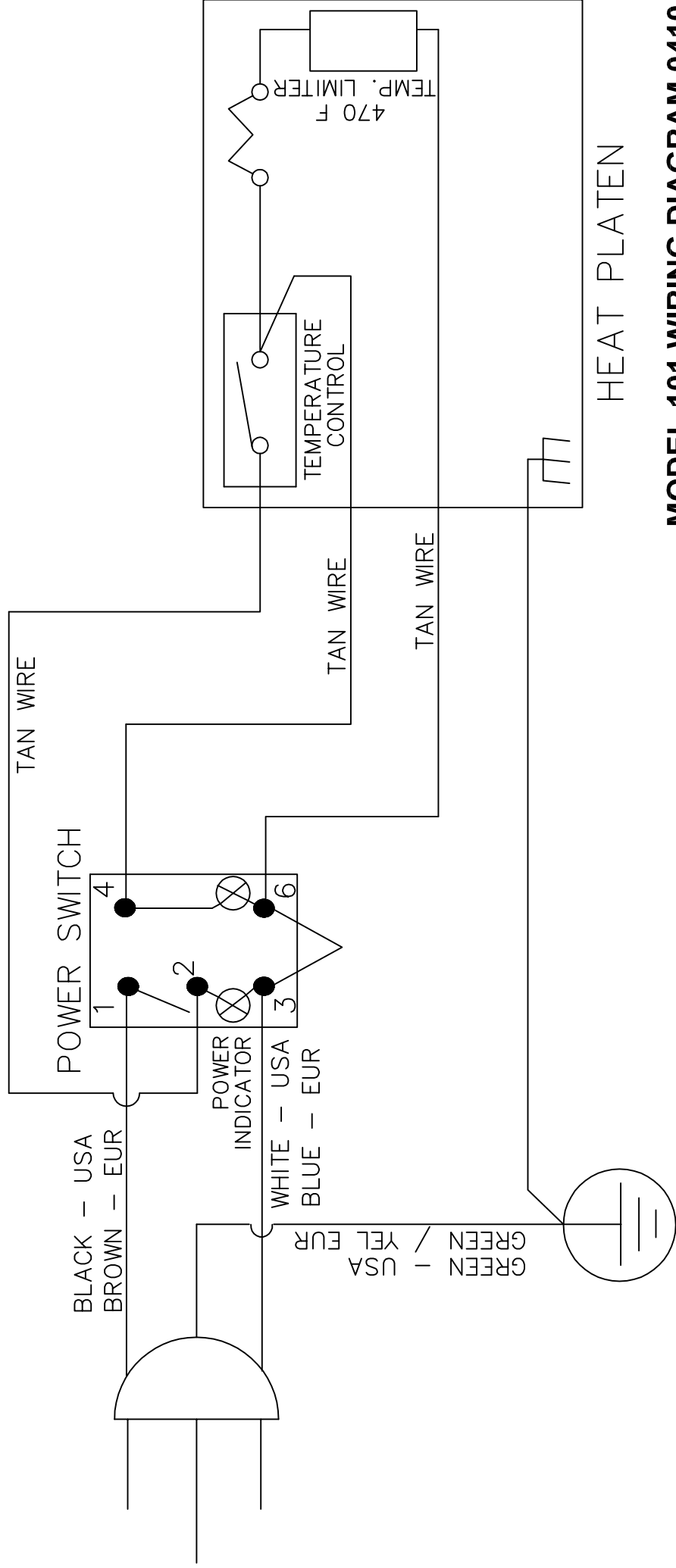
1. Do not heat seal items such as buttons, pins, snaps, or zippers which tend to cut the silicone rubber pad or scratch the Teflon heat platen.
2. Periodically clean the Teflon-coated heat platen with a non-abrasive piece of cloth. Stubborn stains may be cleaned, **when platen is cool**, with mineral spirits.
3. When the heat platen is hot and not in use, keep in open position (away from the silicone rubber pad).
4. To prevent soiling of substrate, periodic wiping of the entire exterior machine, including platens, with a clean rag is recommended. If necessary, use mineral spirits for cleaning a **cold** machine. Since mineral spirits are flammable, use precautions and keep away from sparks, flame, or hot heat platen.
5. Occasionally apply a few drops of heavy machine oil to the moving parts and pressure adjustment screw.



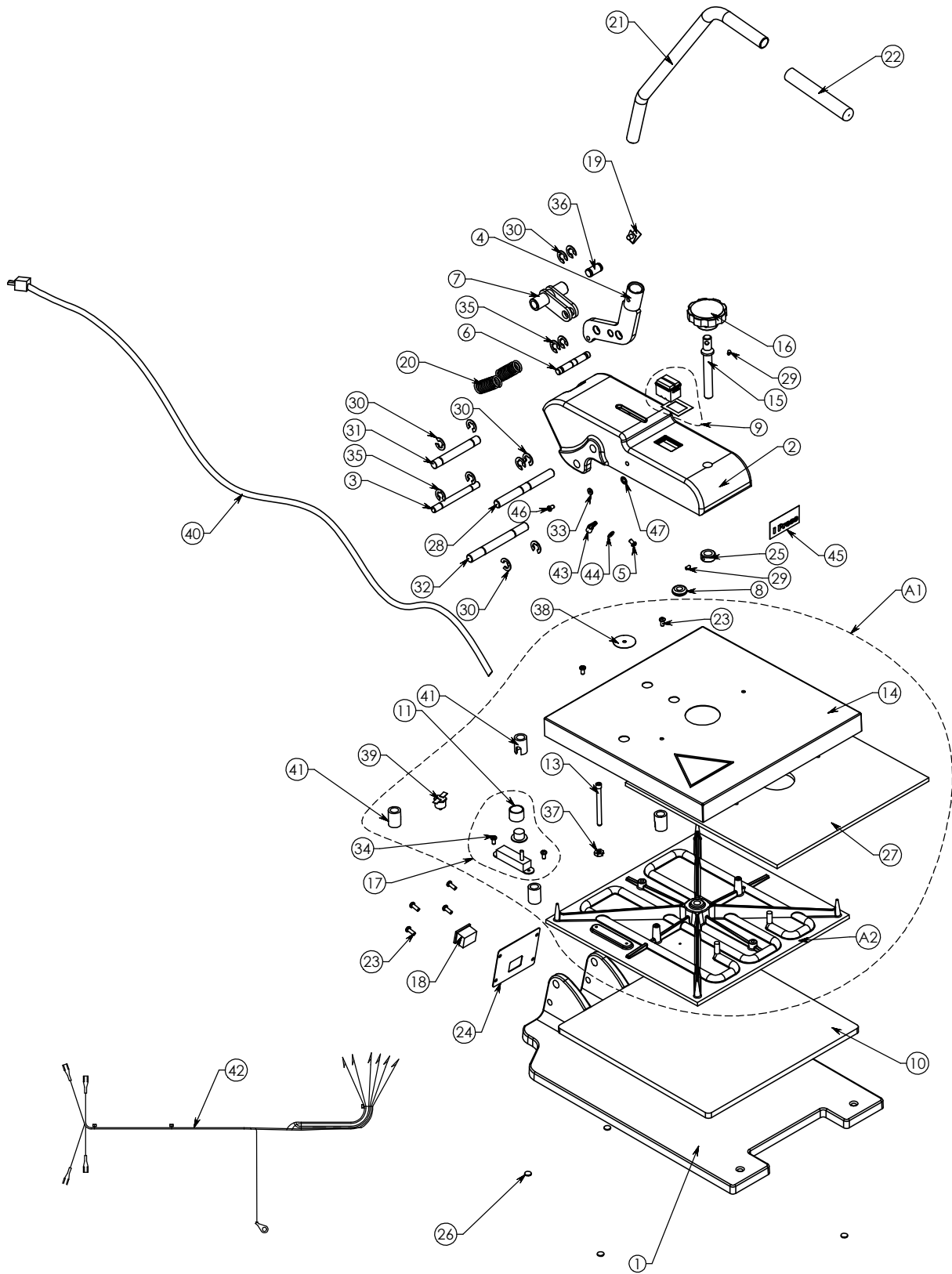
NOTE

Wipe off any excess oil or grease.

MODEL 101



MODEL 101



			MODEL	MODEL
			MS101	MS101
NO	PART NAME	QTY	120V	230V
1	MS101 BASE	1	MPB90161	MPB90161
2	MS101 ARM	1	MPA90162	MPA90162
3	REAR SPRING PIN	1	MPP90252	MPP90252
4	OVERCENTER LEVER	1	MPL90253	MPL90253
5	PHILLIPS SCREW PAN HEAD 8-32x5/16	1	SP832516	SP832516
6	OVER CENTER SPRING PIN	1	MPP90254	MPP90254
7	OVER CENTER LOCK ASSEMBLY	1	MPL90255	MPL90255
8	GROMMET	1	1004542116	1004542116
9	SWITCH POWER WITH CLIP	1	MPPS230	MPPS230
10	13 X 13 RUBBER PAD	1	MPP90163	MPP90163
11	SLEEVE, 101 TEMP. CONTROL	1	MPS90293	MPS90293
13	GUIDE PIN	1	MPP90256	MPP90256
14	UPPER PLATEN SHROUD	1	MPSS101	MPSS101
15	PRESSURE ADJUSTMENT SCREW	1	MPS90257	MPS90257
16	ADJUST KNOB	1	MPPK018	MPPK018
17	TEMPERATURE CONTROLLER W/KNOB	1	MPPT032	MPPT032
18	INLET POWER CONNECTOR	1	MPC90258	MPC90258
19	SINGLE PIN HANDLE	1	MPP90259	MPP90259
20	RETURN SPRING	2	MPS90260	MPS90260
21	PRESSURE HANDLE	1	MPH90261	MPH90261
22	RUBBER GRIP	1	MPSH168	MPSH168
23	PHILLIPS SCREW PAN HEAD 10-32x3/16	6	SP103212	SP103212
24	REAR COVER PLATE	1	MPP90262	MPP90262
25	ADJUST COLLAR	1	MPSP247	MPSP247
26	RUBBER FOOT	6	MPF90004	MPF90004
27	INSULATION SHROUD 13X13	1	MPI90263	MPI90263
28	HANDLE PIN	1	MPP90264	MPP90264
29	SET SCREW	2	SST1032316	SST1032316
30	E-CLIP FOR 1/2 PIN	8	MPSC240	MPSC240
31	CENTER LOCK PIN	1	MPP90265	MPP90265
32	BOTTOM PIN	1	MPP90266	MPP90266
33	LOCK WASHER #8	1	WL8	WL8
34	PHILLIPS SCREW PAN HEAD 6-32x1/4	2	SP63214	SP63214
35	E-CLIP FOR 3/8 PIN	4	MPSC241	MPSC241
36	OVER CENTER LEVER MECHANISM PIN	1	MPP90267	MPP90267
37	NUT 1/4-20	1	MPNH1420	MPNH1420
38	TEMPERATURE DECAL	1	100454221	100454221
39	TEMPERATURE LIMITER	1	MPPT045	MPPT045
40	POWER CORD	1	MPP90250	MPP90251
41	TEFLON BUSHING	4	MPS90285	MPS90285
42	WIRE HARNESS	1	MPW90180	MPW90180
43	WIRE CLAMP	1	CC14	CC14
44	WASHER #8	1	WSAE8	WSAE8
45	DECAL	1	MPL90176	MPL90176
46	PHILLIPS SCREW PAN HEAD 8-32x1/4	1	SP83214	SP83214
47	INTERNAL LOCK WASHER #8	1	WLIT8	WLIT8
A1	PLATEN HEAT ASSY COMPLETE	1	MPP1011-A	MPP1012-A
A2	PLATEN HEAT WITH WIRING	1	MPP101W	MPP1012W



Insta Graphic Systems

13925 E. 166th Street

Cerritos, CA USA 90702-7900

Phone: 1 (562) 404.3000

Outside CA: 1 (800) 421.6971

Fax: 1 (562) 404.3010

E-mail: info@instagraph.com

Website: www.instagraph.com

**The Service Department
direct hot line numbers are:**

1 (800) 426.3609

1 (951) 943.4776

Fax: 1 (951) 443.4113

E-mail: service@instagraph.com

INSTA DESIGNS, DEVELOPS,
MANUFACTURES AND SELLS
QUALITY HEAT TRANSFER
MACHINES AND A BROAD
RANGE OF INNOVATIVE HEAT
TRANSFERS WORLDWIDE.

