

INSTA[™]

INSTA GRAPHIC SYSTEMS



MODEL 138

OPERATION AND MAINTENANCE MANUAL

Safety Summary



WARNING

In case of power cord damage, do not attempt to repair or replace the power cord. Contact the manufacturer or the local distributor.



WARNING

Hot Surface. Avoid contact.



CAUTION

During normal operation, the base of the machine needs to be installed or placed above the wall socket.



CAUTION

The machine is to be operated by one person only.



CAUTION

To reduce the risk of electric shock and injury to persons, disconnect from power supply before servicing and /or cleaning.

International Symbols



Power Off



Power On



Hot Surface



Risk of Electrical Shock



Protective Earth Terminal



Ground



Caution - Warning

Congratulations!

Your selection of the Insta Graphic Systems heat seal machine is a sound business decision. Insta equipment is the result of the highest quality engineering and time-tested design. Your new machine combined with Insta's reputation of innovation in the heat-sealing field, insures the continuing capability of delivering the best-decorated substrates possible.

This manual describes installation, operation, and maintenance procedures for your new model 138 machine, as well as easy to use instructions for on-the-spot maintenance.

Your model 138 machine will have a long, trouble free life. Read this manual. Keep it with your machine; it's your key to proper operation and lasting service.

Limited Machine Warranty

Insta Graphic Systems warrants this heat seal machine, when operated under normal conditions, to be free from manufacturing defects in material and workmanship for a period of one year on parts (lifetime on the heating element) and 90 days on labor from the invoice date.

This warranty will be effective only when Insta authorizes the original purchaser to return the product to the factory in Cerritos, California, freight prepaid, and only when the product upon examination has proven to be defective.

This warranty does not apply to any machine that has been subjected to misuse, negligence or accident.

Insta shall not be liable for the injury, loss or damage, direct or consequential, arising out of the use or the inability to use the product.

No claim of any kind shall be greater in amount than the sale price of the product or part to which claim is made.

This is the sole warranty given by the company, it is in lieu of any other warranties, expressed or implied, in law or in fact, including the warranties of merchantability and fitness for a particular use, and is accepted as such by the purchaser in taking delivery of this product.

Installation



DOMESTIC

Use a **separate** 15 amp AC circuit. Only industrial extension cords with proper wire size should be used: size 16/3 wire for distances up to 25 feet, and size 14/3 for distances up to 50 feet.



INTERNATIONAL

Use a **designated** 16 amp AC circuit. Only industrial extension cords with proper wire size (2.5 sq. mm) shall be used.



IMPORTANT

The appliance must be plugged into a proper receptacle of the proper size and rating. Equally important the line voltage must be able to accommodate this appliance as well as *other appliances operating on this circuit.*

Degree of Protection

IP (Ingress Protection) rating according to IEC 60529.

NOTE

IEC 60529 does not specify sealing effectiveness against the following: mechanical damage of the equipment; the risk of explosion; certain types of liquid conditions, e.g. those that are produced by condensation; corrosive vapours; fungus; vermin

IP54 = IP
1st Digit 5
2nd Digit 4

1 st Digit	Protection from solid objects	2 nd Digit	Protection from moisture
0	Non protected	0	Non protected
1	Objects greater than 50mm	1	Dripping water
2	Objects greater than 12mm	2	Dripping water when tilted up to 15 deg.
3	Objects greater than 2.5mm	3	Spraying water
4	Objects greater than 1mm	4	Splashing water
5	Dust protected	5	Water jets
6	Dust tight	6	Heavy seas
--	---	7	.15m – 1m immersion
--	---	8	1m + submersion

Specifications

MODEL 138

Voltage	120 Volts AC	50/60 Hertz
Model 138	1750 Watts	14.6 Amps

Voltage	230 Volts AC	50/60 Hertz
Model 138	2200 Watts	9.6 Amps

Model 138	
Machine Weight	95 Pounds (41.1KG)

Operation

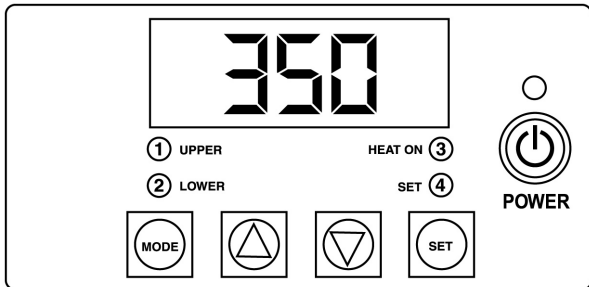
1. Turn the power on by pressing the **POWER** button on the controller.
2. Set desired temperature and time. (See Solid State Controller section)
3. Lift handle so that the upper platen is away from lower platen.
4. Allow the machine to warm up until the selected temperature is reached.
5. Set the desired pressure by adjusting the pressure adjust wheel located on the handle assembly. To reduce pressure, turn wheel to the right (clockwise).
6. Place the substrate on lower platen.
7. Position transfer or lettering on substrate.
8. Close machine by pulling handle down into the closed, operational position.
9. The timer will start automatically and a buzzer will beep at the end of the time cycle.
10. At the end of the operational cycle, lift the handle slowly and move upper platen to its full open position.

Environmental Conditions

Only operate Insta heat seal machines under suitable environmental conditions.

1. Placed on a even, non flammable surface.
2. Can support a minimum of 300 lbs. if placed above a platform.
3. Do not restrict access to the main power switch.
4. Maintain a clearance around any forms of liquid.
5. Do not over extend the power cord.
6. The operational voltage should not be 10% max/min of the rated value.
7. Avoid voltage spikes.

Operation Timer/Temperature Control



Solid State Controller

This controller has three (3) control features:

1. Temperature - Temperature may be set from 225 - 450°F (107-232°C).
2. Time - Time may be set from 1 second to 99.59 minutes.
3. Counter – Cycle counter counts the number of applications from 1 to 9999 (see additional Notes – Counter).

Controller Operation

1. If the temperature is not being displayed, press the **MODE** button until temperature is displayed.
2. Push and hold **SET** button and simultaneously push UP (↑) or DOWN (↓) arrow buttons to the desired temperature setting.
3. Press the **MODE** button until time is displayed.
4. Push and hold **SET** button and simultaneously push UP (↑) or DOWN (↓) arrow buttons to the desired timer setting.

Temperature



NOTE

Fahrenheit/Centigrade (Celsius) Conversion

The temperature controller can be programmed to display °F or °C.

To change:

*Press the **MODE** button until the temperature is displayed, then push and hold the **SET** button for 10 seconds.*

Timer

- The controller has a count down timer that automatically activates a buzzer at the completion of the application.
- Timer display is minutes:seconds. Range is **00:00** to **99:59**, Colons (:) flash while timer is running.

Counter

The controller has a built in cycle counter.

- Press **MODE** button until the counter is displayed.
- Counter display range is 0000 to 9999.
- To reset the cycle counter, display the counter reading, then push and hold UP (↑) and DOWN (↓) arrow buttons for 3 seconds until the counter resets to zero (**0000**) on the display.

Preventive Maintenance Suggestions

The Insta heat seal machines are relatively maintenance free. For long, trouble-free life, the following preventive maintenance should be followed:

1. Do not heat seal items such as buttons, pins, snaps, or zippers that tend to cut the silicone rubber pad or scratch the Teflon heat platen.
2. Periodically clean the Teflon-coated heat platen with a non-abrasive piece of cloth. Stubborn stains may be cleaned, **when platen is cool**, with mineral spirits.
3. When the heat platen is hot and not in use, keep in open position (away from the silicone rubber pad).
4. To prevent soiling of substrate, periodic wiping of the entire exterior machine, including platens, with a clean rag is recommended. If necessary, use mineral spirits for cleaning a **cold** machine. Since mineral spirits are flammable, use precautions and keep away from sparks, flame, or hot heat platen.
5. Occasionally apply a few drops of light machine oil (such as 3-IN-ONE) to the moving parts and pressure adjustment screw.

NOTE

Wipe off any excess oil.



Replacement of Silicone Rubber Pads

1. Make sure heat platen is cool.
2. Use tube of MPPC006 silicone adhesive sealant to bond the silicone rubber pad to metal platen.

NOTE: *Read instructions on the tube package.*

3. Be sure that the surface of the silicone platen is clean. Use a **mild** solvent such as **mineral spirits**.
 4. The pad and metal must be thoroughly dry and clean, before starting the bonding operation.
 5. Apply adhesive sealant to the metal platen. Spread a thin even coat and apply pad immediately. Apply pressure and position pad making sure that there is no air entrapment.
- NOTE:** *A serrated blade such as used for laying down rubber floor tiles would be helpful.*
6. Allow to cure overnight under low pressure at normal room temperature.

FOR USE BY QUALIFIED PERSONNEL ONLY

Safety and Danger Zone Diagram



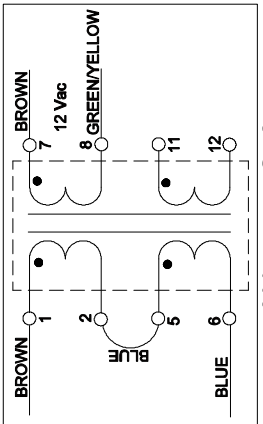
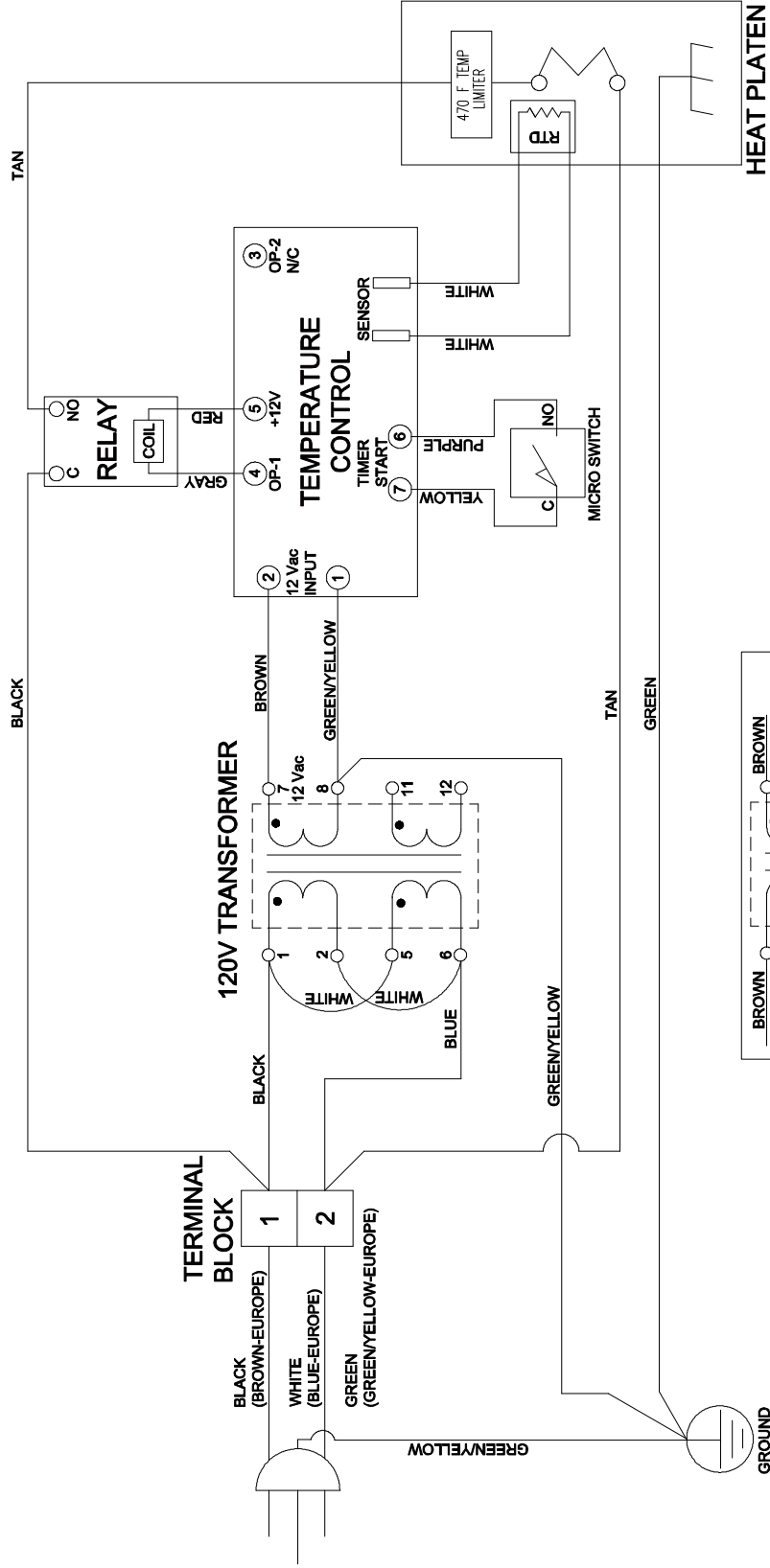
Do not handle the machinery with wet hands

Hot Surface. Avoid contact with Upper Platen Shroud

Keep hands clear

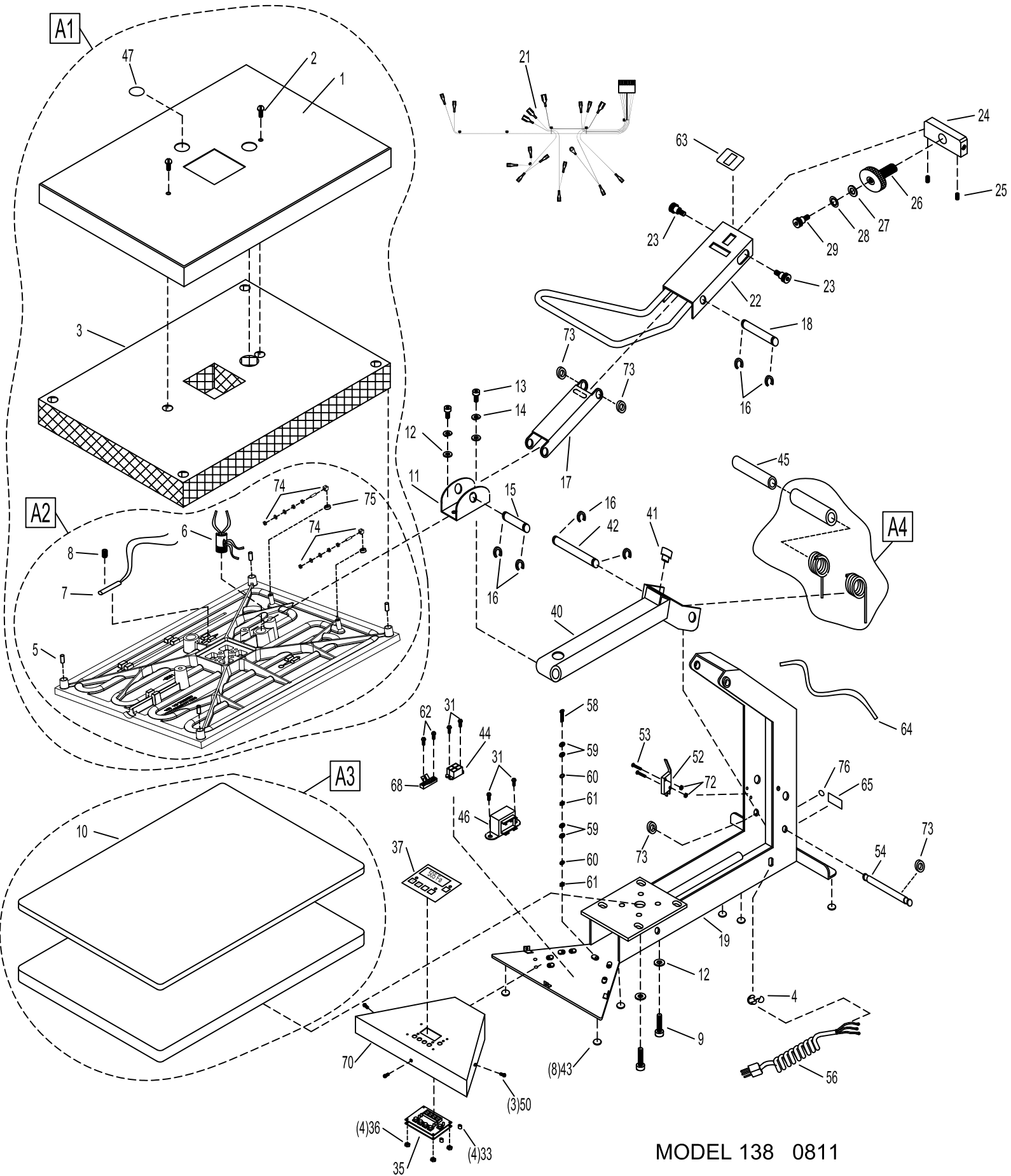
Machinery should be operated under a secure flat surface

MODEL 138



MODEL 138 WIRING DIAGRAM 0305

MODEL 138



		MODEL	MODEL
		138	138
NO	PART NAME	120V AC	230V AC
1	SHROUD, UPPER PLATEN	MPS90155	MPS90155
2	SCREW, BUTTON HD 5/16-18 x .50 LG	MHSB5161812	MHSB5161812
3	INSULATION, FIBERGLASS 15X20	MPI90158	MPI90158
4	STRAIN, RELIEF CABLE	MPS90014	MPS90014
5	INSULATORS, SHROUD (SET 4)	MPI90156	MPI90156
6	POST, GUIDE	MPP90000	MPP90000
7	SENSOR, TEMP. REPLACEMENT KIT	MPPS210	MPPS210
8	SCREW, SET 3/8-16 x .50 LG.	MHSST381612	MHSST381612
9	SCREW, SOCKET HD 5/16-18UNC x .750 LG.	MHSSH5161834	MHSSH5161834
10	PAD, SILICONE 15 X 20 BLK	MPPP031	MPPP031
11	BRACKET, CLEVIS	MPB90001	MPB90001
12	WASHER, SAE 5/16 I.D. PRESSURE ADJ.	MHWSAE516	MHWSAE516
13	BOLT, HEX 5/16-18 X 1 LG STAIN	MHBH516181S	MHBH516181S
14	WASHER, LOCK 5/16" I.D.	MHWL516	MHWL516
15	PIN, BOTTOM PRESSURE	MPP90003	MPP90003
16	CLIPS, "E"	MPSC240	MPSC240
17	LINK, LOWER	MPL90000	MPL90000
18	PIN, HANDLE PRESSURE	MPP90001	MPP90001
19	FRAME, BASE ASSY	MPB90164	MPB90164
21	WIRE, HARNESS ASSY	MPW90133	MPW90133
22	CHANNEL, HANDLE ASS'Y	MPC90129	MPC90129
23	SCREW, SHOULDER BOLT .500-13 x.750 LG.	MHBS1234	MHBS1234
24	BLOCK, PIVOT PRESSURE	MPB90002	MPB90002
25	SCREW, SET 1/4"-20X3/8" CP	MHSST142038CP	MHSST142038CP
26	KNOB, WHEEL ADJUSTING ASS'Y	MBAW90000	MBAW90000
27	WASHER, SHIM 1/2" I.D. x .031 THK	MHWS0136	MHWS0136
28	WASHER, WAVE 1/2" I.D. x .015 THK	MH5806282	MH5806282
29	BOLT, SHOULDER 1/2" X 1/2"	MHBS1212	MHBS1212
31	SCREW, PAN HD 8-32 X .375" LG	MHSP83238	MHSP83238
33	SPACER, NYLON 0.166 ID X1/4 LG	MH110969111	MH110969111
35	CONTROLLER, DIGITAL W/SWITCH	MPC90003	MPC90003
36	NUT, HEX 6-32	MHNNH632	MHNNH632
37	LABEL, CONTROLLER OVERLAY	MPSL128	MPSL128
40	PIVOT, HANDLE ASS'Y	MBAP90000	MBAP90000
41	BUMPER, PIVOT HANDLE	MPB90004	MPB90004
42	PIN, ARM PIVOT	MPP90002	MPP90002
43	FEET, RUBBER (6/SET)	MPF90004	MPF90004
44	RELAY	MPPR200	MPPR200
45	TUBE, PIVOT	MPT90003	MPT90003

		MODEL	MODEL
		138	138
NO	PART NAME	120V AC	230V AC
46	TRANSFORMER (USA MODEL)	MPT90001	MPT90001
46A	TRANSFORMER (EUROPEAN/BRITAIN)	N/A	MPT90319
47	PLUG, BUTTON SHROUD	MHPB78	MHPB78
52	SWITCH, MICRO	MPS90018	MPS90018
53	SCREW, PAN HD 4-40UNC x .50 LG.	MHSR44012	MHSR44012
54	PIN, SPRING RETAINER	MPP90007	MPP90007
56	POWER CORD (USA MODEL)	MPPW141	MPPW142
56A	POWER CORD (EUROPEAN MODEL)	N/A	MPPW202
56B	POWER CORD (GREAT BRITAIN)	N/A	MPPW203
58	SCREW, PAN HD 8-32UNC x 1.00 LG	MHSP8321	MHSP8321
59	WASHER, FLAT #8 (.164 I.D.)	MHWSAE8	MHWSAE8
60	WASHER, #8 INTERNAL LOCK	MHWLIT8	MHWLIT8
63	OVERLAY, PRESSURE ADJUSTMENT	MPL90004	MPL90004
64	SLEEVING, SILICONE COATED	MHT117EA1BK	MHT117EA1BK
65	LABEL, DISCONNECT POWER	MPPL001	MPPL001
68	BLOCK, TERMINAL	MH11096914	MH11096914
69	SCREW, PAN HD 8-32UNC x .50 LG.	MHSP83212	MHSP83212
70	HOUSING, INSTRUMENT	MPH90131	MPH90131
72	NUT, HEX 4-40	MHNNH440	MHNNH440
73	SPACER WASHER	MPS90134	MPS90134
74	TERMINAL END ASSY	MPC90157	MPC90157
75	CERAMIC INSULATOR	MPI90159	MPI90159
76	LABEL, ROHS/WEE	MPL90175	MPL90175
A1	PLATEN, HEAT ASS'Y	MPP1381A	MPP1382A
A2	PLATEN, HEAT (WIRING ONLY)	MPP1381W	MPP1382W
A3	PLATEN, LOWER ASS'Y	MASP007	MASP007
A4	SPRING COUNTERBALANCE ASS'Y	MBAS90000	MBAS90000

FOR USE BY QUALIFIED PERSONNEL ONLY

Notes:

FOR USE BY QUALIFIED PERSONNEL ONLY

FOR USE BY QUALIFIED PERSONNEL ONLY



13925 E. 166th St. • Cerritos, CA USA 90702 • (800) 421-6971 • Fax (562) 404-3010

Parts Orders • (800) 426-3609 • (562) 404-3000 Ext. 215
Technical Support • (800) 426-3609 • (562) 404-3000 Ext. 208
In House Repair • (800) 426-3609