

OPERATION AND MAINTENANCE MANUAL



MODEL 914 SHOWN
MODELS - 907/914

Insta[®]
PUT IT ON![®]

HEAT SEAL MACHINES

INSTA GRAPHIC SYSTEMS

FOR USE BY QUALIFIED PERSONNEL ONLY

Safety Summary



WARNING

In case of power cord damage, do not attempt to repair or replace the power cord. Contact the manufacturer or the local distributor.



WARNING

For protection against fire and electric shock, replace with same type and rating fuse. Fuse rated max. 1 amp 120V.



WARNING

Hot Surface. Avoid contact.



CAUTION

During normal operation, the base of the machine needs to be installed or placed above the wall socket.



CAUTION

The recommended input pressure shall not exceed 100 psi. The operating pressure is from 30-100psi.



CAUTION

The operation may be terminated by pressing the **DISENGAGE** switch.



CAUTION

The machine is to be operated by one person only.



CAUTION

To reduce the risk of electric shock and injury to persons, disconnect from power supply before servicing and /or cleaning.

International Symbols



Power Off



Power On



Hot Surface



Risk of Electrical Shock



Protective Earth Terminal



Start Action



Disengage



Ground



Caution - Warning

FOR USE BY QUALIFIED PERSONNEL ONLY

Congratulations!

Your selection of the Insta Graphic Systems heat seal machine is a sound business decision. Insta equipment is the result of the highest quality engineering and time-tested design. Your new machine combined with Insta's reputation of innovation in the heat sealing field, insures the continuing capability of delivering the best decorated garments possible.

This manual describes installation, operation and maintenance procedures for your new 907/914 series machine, as well as easy to use instructions for on the spot maintenance.

Your 907/914 series machine will have a long trouble free life. Read this manual. Keep it with your machine, it's your key to proper operation and lasting service.

Installation



DOMESTIC – 907/914 SERIES

Use a **separate** 15 amp AC circuit. Only industrial extension cords with proper wire size should be used: size 18/3 wire for distances up to 25 feet, and size 16/3 for distances up to 50 feet.



INTERNATIONAL – 907/914 SERIES

Use a **designated** 16 amp AC circuit. Only industrial extension cords with proper wire size (2.5 sq. mm) shall be used.



IMPORTANT

The appliance must be plugged into a proper receptacle of the proper size and rating. Equally important the line voltage must be able to accommodate this appliance as well as *other appliances operating on this circuit.*

Specifications

Voltage	120 Volts AC	50/60 Hertz
Model 907	1000 Watts	8.3 Amps
Model 914	1000 Watts	8.3 Amps

Voltage	230 Volts AC	50/60 Hertz
Model 907	920 Watts	4.0 Amps
Model 914	920 Watts	4.0 Amps

Weight Model 907	94 Pounds (42.7 KG)
Weight Model 914	94 Pounds (42.7 KG)

Limited Machine Warranty

Insta Graphic Systems warrants this heat seal machine, when operated under normal conditions, to be free from manufacturing defects in material and workmanship for a period of one year on parts (lifetime on the heating element) and 90 days on labor.

This warranty will be effective only when Insta authorizes the original purchaser to return the product to the factory in Cerritos, California, freight prepaid, and only when the product upon examination has proven to be defective.

This warranty does not apply to any machine that has been subjected to misuse, negligence or accident.

Insta shall not be liable for the injury, loss or damage, direct or consequential, arising out of the use or the inability to use the product.

No claim of any kind shall be greater in amount than the sale price of the product or part to which claim is made.

This is the sole warranty given by the company, it is in lieu of any other warranties, expressed or implied, in law or in fact, including the warranties of merchantability and fitness for a particular use, and is accepted as such by the purchaser in taking delivery of this product.

Operation

1. Push **ON/OFF** switch to **ON** position.
2. Set desired temperature.
3. Allow the machine to warm up until the selected temperature is reached.
4. Set the desired pressure by adjusting the air pressure regulator.
5. Select the desired timing cycle.
6. Place the substrate on lower platen, smoothing out all wrinkles.
7. Position transfer or lettering on substrate.
8. Swing the upper platen into position directly over the lower platen.



NOTE

For operator safety the machine is designed not to operate unless the upper platen is in the extreme left hand or right hand position.

FOR USE BY QUALIFIED PERSONNEL ONLY

- Depress both start buttons, one on each side of the machine, simultaneously. At this point the machine operation is fully automatic. The upper platen moves downward, seals the transfer to the substrate and then releases automatically at the end of the selected timing cycle.



CAUTION

Do not place hands between the platens after activating.

- Swing away the upper platen to the opposite side and remove substrate.

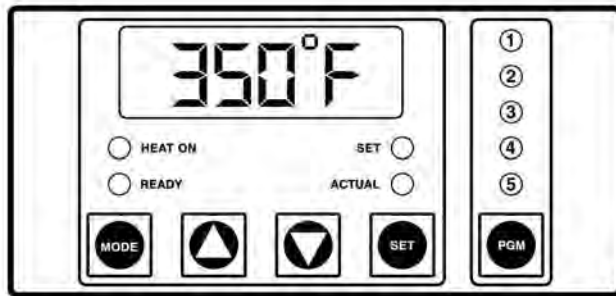


NOTE

Another substrate may be prepared on the unused platen during the sealing operation of the used platen.

- The **DISENGAGE** button may be pushed at anytime to deactivate the machine.

Solid State Controller



This controller has four (4) control features:

- Temperature - Temperature may be set from 125-450°F (52-232°C)
- Time - Time may be set from 1 second to 10 minutes
- Counter - Cycle counter counts the number of applications from 1 to 9999 (see Additional Notes - Counter)
- Presets - Five (5) presets that can be programmed by the user. Each preset will retain a temperature and time setting, i.e. Program #1 could be set for 325°F and 10 seconds while Program #2 could be set for 375°F and 15 seconds. Once the five presets have been programmed, the user need only press the **PGM** button several times until the desired program is selected. The lit LED above the PGM button indicates the selected program. *Note: there is also a sixth setting that is indicated by no lit LED's.*

Controller Operation

- Select the desired program by pressing the **PGM** button until the LED above the **PGM** button indicates the desired setting.
- If a setting other than the presets is desired, press the **PGM** button until **none** of the LED's above the **PGM** button are lit.
- If the temperature is not being displayed, press the **MODE** button until temperature is displayed.
- Push and hold **SET** button and simultaneously push UP (↑) or DOWN (↓) arrow buttons to the desired temperature setting.
- Press the **MODE** button until time is displayed.
- Push and hold **SET** button and simultaneously push UP (↑) or DOWN (↓) arrow buttons to the desired timer setting.
- Note:** When the machine is operating with **none** of the LED's lit, i.e. no presets, the time and temperature **WILL BE SAVED** even if the power is turned off. The presets will also be saved when the power is turned off.
- Allow the machine to warm up until the selected temperature is reached.
- Set the desired pressure by adjusting the air pressure regulator.
- Place the substrate on lower platen.
- Position transfer or lettering on substrate.
- Swing the upper arm into position directly over the lower platen.

NOTE

For operator safety the machine is designed not to operate unless the upper arm is directly over one of the lower platens.



- Depress both start buttons simultaneously. At this point the machine operation is fully automatic. The upper platen moves downward, seals the transfer to the substrate, and then releases automatically at the end of the selected timing cycle.
- Swing away upper platen to the alternate lower platen and remove the substrate.
- The **DISENGAGE** switch (located in the center of the instrument panel) may be pushed at any time to deactivate the machine.

Setting the Presets

To program the presets:

- Push and hold both the **MODE** and **PGM** buttons for 3-5 seconds until one of the programs LED's starts to blink. This is the **programming mode**.
- A lit LED above the **PGM** button indicates which preset is active.

FOR USE BY QUALIFIED PERSONNEL ONLY

3. Select a program (1,2,3,4,or 5) by pressing the **PGM** button
4. If the temperature is not being displayed, press the **MODE** button until temperature is displayed.
Note: If a Fahrenheit/Celsius change is desired see Additional Notes - Temperature.
5. Push and hold **SET** button and simultaneously push UP (↑) or DOWN (↓) arrow buttons to the desired temperature setting.
6. Press the **MODE** button until time is displayed.
7. Push and hold **SET** button and simultaneously push UP (↑) or DOWN (↓) arrow buttons to the desired timer setting.
8. Repeat steps 4-8 until all five (5) presets have the desired preset (temperature/time cycle).
9. Push and hold both the **MODE** and **PGM** buttons for 3-5 seconds to exit the **programming mode**.
10. When in the **normal mode**, none of the five program LED's will be **blinking**.
Note: When the machine is operating in its normal mode, the user cannot change the time and temperature for any of the five presets.

ADDITIONAL NOTES:

Temperature



NOTE

Fahrenheit/Centigrade (Celsius) Conversion

The temperature controller can be programmed to display either °F or °C.

To change:

Push and hold **MODE** and **PGM** buttons for 3 seconds to enter the **programming mode**.

Push the **Mode** button until the temperature is displayed. Then with the **SET** button depressed, push and hold the **MODE** button for 3 seconds. To exit **the programming mode**, push and hold **MODE** and **PGM** buttons for 3 seconds.

Timer

- The controller has a count down timer, which automatically disengages (opens) the machine at the completion of the application.
- Timer display is minutes:seconds. Range is **00:00** to **10:00**, Colons (:) flash while timer is running.
- The **DISENGAGE** button (center of instrument panel) may be pressed anytime during a cycle, and the cycle will stop immediately, and the timer will reset.

Counter

The controller has a built in cycle counter.

- Press **MODE** button until the counter is displayed.
- Counter display range is 0000 to 9999.
- To reset the cycle counter, display the counter reading, then push and hold both UP (↑) and DOWN (↓) arrow buttons for 3 seconds until the counter resets to zero (**0000**) on the display.

FOR USE BY QUALIFIED PERSONNEL ONLY

Preventive Maintenance Suggestions

The Insta heat seal machines are relatively maintenance free. For long trouble-free life, the following preventive maintenance instructions should be followed:

1. Do not heat seal items such as buttons, pins, snaps, or zippers which tend to cut the silicone rubber pad or scratch the Teflon heat platen.
2. Periodically clean the Teflon-coated heat platen with a non-abrasive piece of cloth. Stubborn stains may be cleaned, **when platen is cool**, with mineral spirits.
3. When the heat platen is hot and not in use, keep in open position (away from the silicone rubber pads).
4. To prevent soiling of garment, periodic wiping of the entire exterior machine, including platens, with a clean rag is recommended. If necessary, use mineral spirits for cleaning a **cold** machine. Since mineral spirits are flammable, use precautions and keep away from sparks, flame, or hot heat platen.
5. Occasionally apply a few drops of heavy machine oil to the moving parts.



NOTE

Wipe off any excess oil or grease.

General Maintenance

It is recommended that you have the following items available:

- A. Regular screw driver
- B. Phillips head screw driver
- C. Small adjustable wrench
- D. Needle nose pliers with insulated handle
- E. Set of Allen wrenches (supplied with the machine)

With the above items you should be able to accomplish most repairs.



WARNING

Power cord replacement should be supplied from the manufacturer only (because it requires a specially prepared cord).

Micro Switch Adjustment

1. Disconnect power supply, remove top panel of instrument housing.
2. Swing upper platen into working position until stop is reached.
3. The micro switch must be adjusted to **JUST CLOSE**, as upper platen swings to this position.
4. To change micro switch setting, loosen the screw on slotted end of micro switch. Move in desired direction to bring switch to **JUST CLOSED** condition (listen for an audible click from micro switch) and re tighten screw.



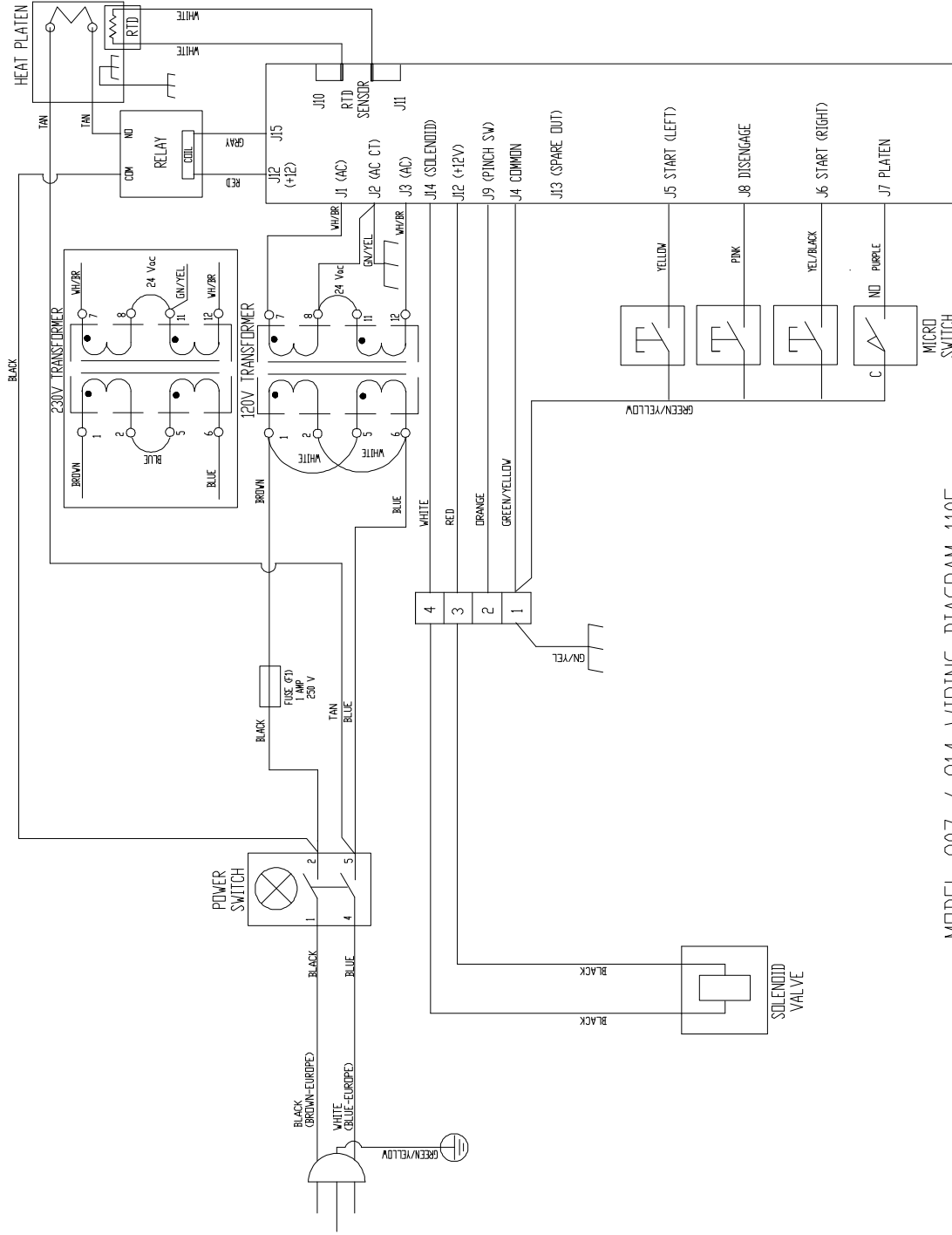
NOTE:

*Machines are shipped with a standard MPPF085 air fitting. **EUROPEAN models include a MPPF086 quick disconnect air fitting.***

FOR USE BY QUALIFIED PERSONNEL ONLY

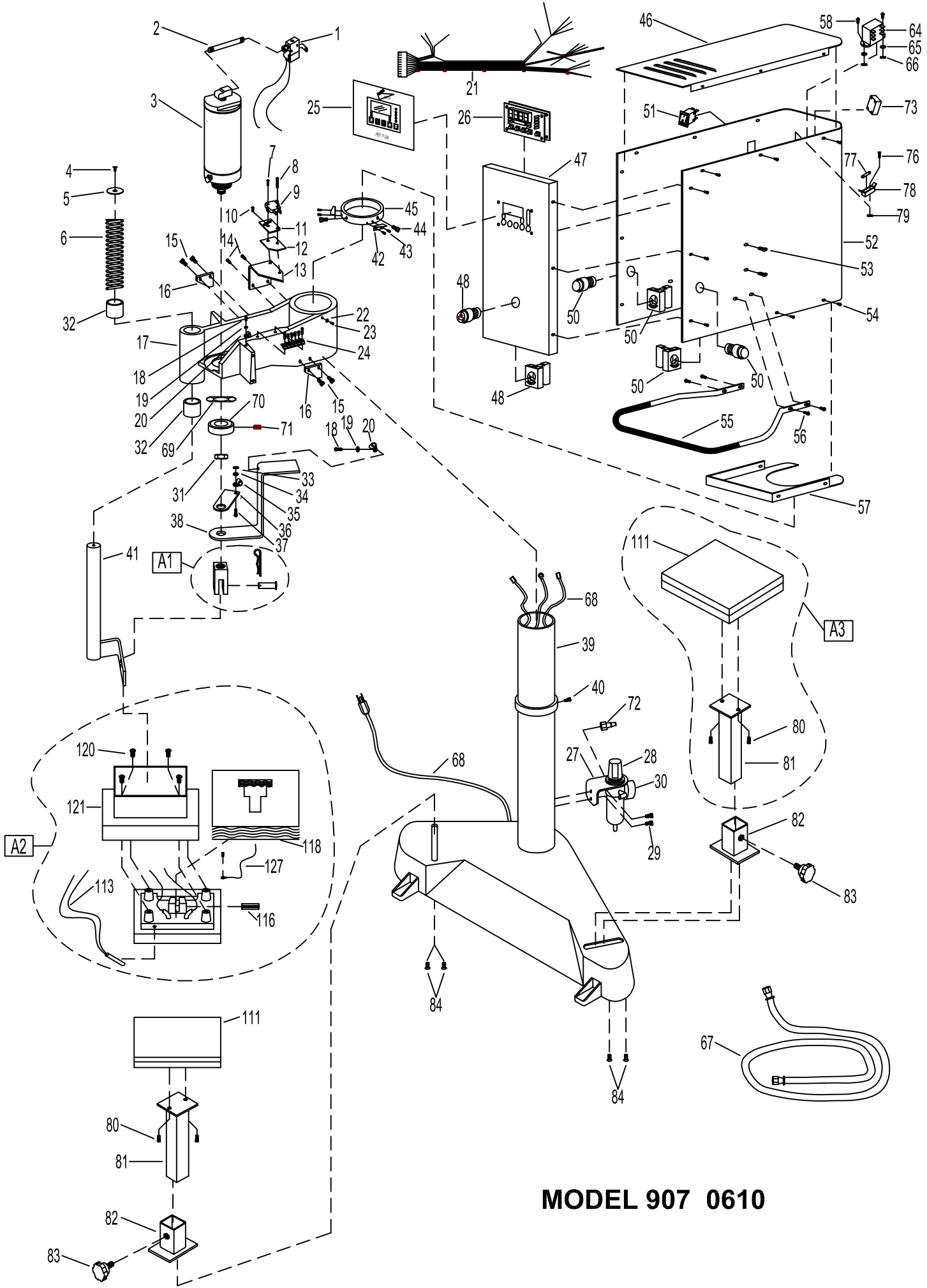
Notes:

MODEL 907 / 914



MODEL 907 / 914 WIRING DIAGRAM 1105

MODEL 907

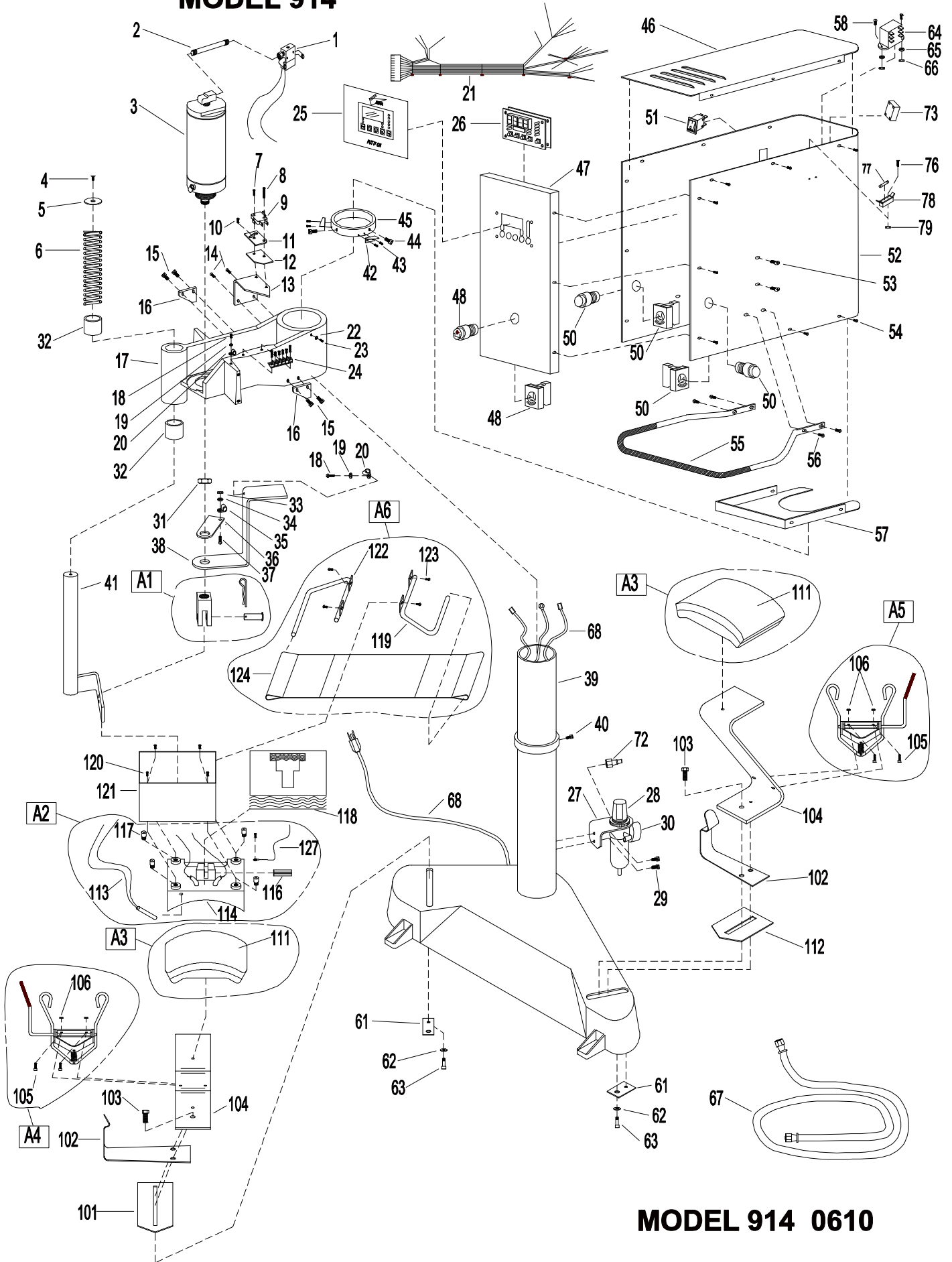


MODEL 907 0610

		MODEL	MODEL
		907	907
NO	PART NAME	115V AC	230V AC
1	AIR SOLENOID VALVE ASS'Y	MPPA903	MPPA903
2	NIPPLE, CYLINDER	MHN14412	MHN14412
3	AIR CYLINDER ASS'Y	MPPA413	MPPA413
4	SCREW, COMPRESSION SPRING 1/4-20 X 3/4	MHSF142034	MHSF142034
5	WASHER, SPRING	MHWC716	MHWC716
6	SPRING, COMPRESSION	MPSS884	MPSS884
7	SCREW, MICRO SWITCH 4-40 X 1/2	MHSR44012	MHSR44012
8	SCREW, MICRO SWITCH 4-40 X 3/4	MHSR44034	MHSR44034
9	MICRO SWITCH (ARM)	MPPS044	MPPS044
10	SCREW, MICRO SWITCH 8-32 X 3/8	MHSP83238	MHSP83238
11	PLATE, MICRO SWITCH MOUNTING	MH700213	MH700213
12	INSULATOR, MICRO SWITCH	MH700214	MH700214
13	BRACKET, MICRO SWITCH	MPSM90018	MPSM90018
14	SCREW, MICRO SWITCH BRACKET 10-24 X 3/8	MHSP102438	MHSP102438
15	SCREW, STOP BRACKET 1/4-20 X 1/2	MHSH142012	MHSH142012
16	BRACKET, STOP	MPSM90010	MPSM90010
17	ARM ASS'Y	MPSA90021	MPSA90021
18	SCREW, 8-32 X 3/8	MHSP83238	MHSP83238
19	WASHER	MHWSAE8	MHWSAE8
20	CLAMP, CABLE	MHCC516	MHCC516
21	WIRE HARNESS	MPPW931	MPPW932
22	WASHER	MHWSAE8	MHWSAE8
23	SCREW, 8-32 X 3/8	MHSP83238	MHSP83238
24	TERMINAL BLOCK	MPST6994	MPST6994
25	HOUSING OVERLAY DECAL	MPPL015	MPPL015
26	DIGITAL CONTROLLER	MPPT752	MPPT752
27	MOUNT, AIR REGULATOR FILTER	MPSM90009	MPSM90009
28	AIR PRESSURE/FILTER REGULATOR ASS'Y	MPPA900	MPPA900
29	SCREW, AIR FILTER 1/4-20 X 1/2	MHSH142012	MHSH142012
30	AIR GAUGE ASS'Y	MPPA025	MPPA025
31	NUT, JAM CLEVIS	MHJN21	MHJN21
32	BUSHING, GUIDE POST	MPSB070	MPSB070
33	NUT, HEX	MHNNH832	MHNNH832
34	WASHER	MHWSAE8	MHWSAE8
35	CLAMP, CABLE	MHCC516	MHCC516
36	BRACKET, WIRE STABILIZER	MPSM90019	MPSM90019
37	SCREW, 8-32 X 1/2	MHSP83212	MHSP83212
38	BRACKET, ELECTRICAL SUPPORT	MPSM90024	MPSM90024
39	BASE ASS'Y	MPSB90711	MPSB90711
40	SCREW, SOCKET 5/16-18 X 3/4	MHH5161834	MHH5161834
41	GUIDE POST ASS'Y	MPSG90008	MPSG90008
42	CAM, MICRO SWITCH	MPSC90020	MPSC90020
43	SCREW, PAN HD 6-32 X 1/4	MHSP63214	MHSP63214
44	SCREW, SOCKET HD 5/16-18 X 3/4	MHH5161834	MHH5161834
45	COLLAR, POST	MPSC90023	MPSC90023
46	PANEL, TOP COVER (SHEET METAL)	MPSM90004	MPSM90004
47	PANEL, FRONT (SHEET METAL)	MPSM90703	MPSM90703
48	DISENGAGE SWITCH ASS'Y	MPPS713	MPPS713
50	START SWITCH ASS'Y	MPPS703	MPPS703
51	POWER SWITCH (ON/OFF) ASS'Y	MPPS060	MPPS060
52	PANEL, WRAP AROUND (SHEET METAL)	MPSM90701	MPSM90701
53	SCREW, 10-24 X 3/8	MHSP102438	MHSP102438

		MODEL	MODEL
		907	907
NO	PART NAME	115V AC	230V AC
54	SCREW, 6-32 X 1/4	MHP63214ST	MHP63214ST
55	HANDLE	MPSH900	MPSH900
56	SCREW, 8-32 X 1/2	MHSP83212	MHSP83212
57	PLATE, BOTTOM (SHEET METAL)	MPSM90002	MPSM90002
58	SCREW, TRANSFORMER	MHSP83238	MHSP83238
64	TRANSFORMER	MPPT700	MPPT700
65	WASHER	MHWSAE8	MHWSAE8
66	NUT, TRANSFORMER	MHNNH832	MHNNH832
67	AIR HOSE	MPPA005	MPPA005
68	POWER CORD (USA MODEL)	MPPW161	MPPW162
68A	POWER CORD (EUROPEAN MODEL)	N/A	MPPW202
68B	POWER CORD (GREAT BRITAIN)	N/A	MPPW203
69	NUT, HEX JAM	MHNNHJ114	MHNNHJ114
70	SPACER, PISTON ROD	MPSB900	MPSB900
71	SCREW, SET 1/4-20 X 3/8	MHST142038	MHST142038
72	AIR FITTING INLET	MPPF085	MPPF085
73	RELAY, SOLID STATE	MPSR2450	MPSR2450
76	SCREW, FUSE	MHSF44038	MHSF44038
77	FUSE F1 (1 AMP 250V)	MPPF701R	MPPF701R
78	FUSE HOLDER ASSEMBLY	MPPF708	MPPF708
79	NUT, FUSE	MHNNH440	MHNNH440
80	SCREW, LOWER PLATEN TUBE	MHSH142012	MHSH142012
81	LOWER PLATEN SUPPORT TUBE	MPSP477	MPSP477
82	SOCKET, LOWER PLATEN	MPSP499	MPSP499
83	KNOB, LOWER PLATEN	MH4110H	MH4110H
84	SCREW, SOCKET ATTACHMENT	MHSB142012	MHSB142012
111	SILICONE RUBBER PAD	MPPP026	MPPP026
113	SENSOR, RTD (2000 OHM)	MPPS210	MPPS210
116	PIN, UPPER PLATEN	MPPR38112	MPPR38112
118	INSULATION FIBERGLASS	MPSP249	MPSP249
120	SCREW, SHROUD (4 SET)	MHSB381612	MHSB381612
121	HEAT SHROUD	MPS90143	MPS90143
127	GROUND WIRING WITH SCREW	MPW90140	MPW90140
A1	CLEVIS ASS'Y	MPSC919	MPSC919
A2	UPPER PLATEN ASS'Y	MPP9071A	MPP9072A
A3	LOWER PLATEN ASS'Y	MPSP475	MPSP475

MODEL 914



MODEL 914 0610

		MODEL	MODEL
		914	914
NO	PART NAME	115V AC	230V AC
1	AIR SOLENOID VALVE ASS'Y	MPPA903	MPPA903
2	NIPPLE, CYLINDER	MHN14412	MHN14412
3	AIR CYLINDER ASS'Y	MPPA413	MPPA413
4	SCREW, COMPRESSION SPRING 1/4-20 X 3/4	MHSF142034	MHSF142034
5	WASHER, SPRING	MHWC716	MHWC716
6	SPRING, COMPRESSION	MPSS884	MPSS884
7	SCREW, MICRO SWITCH 4-40 X 1/2	MHSR44012	MHSR44012
8	SCREW, MICRO SWITCH 4-40 X 3/4	MHSR44034	MHSR44034
9	MICRO SWITCH (ARM)	MPPS044	MPPS044
10	SCREW, MICRO SWITCH 8-32 X 3/8	MHSP83238	MHSP83238
11	PLATE, MICRO SWITCH MOUNTING	MH700213	MH700213
12	INSULATOR, MICRO SWITCH	MH700214	MH700214
13	BRACKET, MICRO SWITCH	MPSM90018	MPSM90018
14	SCREW, MICRO SWITCH BRACKET 10-24 X 3/8	MHSP102438	MHSP102438
15	SCREW, STOP BRACKET 1/4-20 X 1/2	MHSH142012	MHSH142012
16	BRACKET, STOP	MPSM90010	MPSM90010
17	ARM ASS'Y	MPSA90021	MPSA90021
18	SCREW, 8-32 X 3/8	MHSP83238	MHSP83238
19	WASHER	MHWSAE8	MHWSAE8
20	CLAMP, CABLE	MHCC516	MHCC516
21	WIRE HARNESS	MPPW931	MPPW932
22	WASHER	MHWSAE8	MHWSAE8
23	SCREW, 8-32 X 3/8	MHSP83238	MHSP83238
24	TERMINAL BLOCK	MPST6994	MPST6994
25	HOUSING OVERLAY DECAL	MPPL015	MPPL015
26	DIGITAL CONTROLLER	MPPT752	MPPT752
27	MOUNT, AIR REGULATOR FILTER	MPSM90009	MPSM90009
28	AIR PRESSURE/FILTER REGULATOR ASS'Y	MPPA900	MPPA900
29	SCREW, AIR FILTER 1/4-20 X 1/2	MHSH142012	MHSH142012
30	AIR GAUGE ASS'Y	MPPA025	MPPA025
31	NUT, JAM CLEVIS	MHJN21	MHJN21
32	BUSHING, GUIDE POST	MPSB070	MPSB070
33	NUT, HEX	MHNNH832	MHNNH832
34	WASHER	MHWSAE8	MHWSAE8
35	CLAMP, CABLE	MHCC516	MHCC516
36	BRACKET, WIRE STABILIZER	MPSM90019	MPSM90019
37	SCREW, 8-32 X 1/2	MHSP83212	MHSP83212
38	BRACKET, ELECTRICAL SUPPORT	MPSM90024	MPSM90024
39	BASE ASS'Y	MPSB90711	MPSB90711
40	SCREW, SOCKET 5/16-18 X 3/4	MHH5161834	MHH5161834
41	GUIDE POST ASS'Y	MPSG90008	MPSG90008
42	CAM, MICRO SWITCH	MPSC90020	MPSC90020
43	SCREW, PAN HD 6-32 X 1/4	MHSP63214	MHSP63214
44	SCREW, SOCKET HD 5/16-18 X 3/4	MHH5161834	MHH5161834
45	COLLAR, POST	MPSC90023	MPSC90023

		MODEL	MODEL
		914	914
NO	PART NAME	115V AC	230V AC
46	PANEL, TOP COVER (SHEET METAL)	MPSM90004	MPSM90004
47	PANEL, FRONT (SHEET METAL)	MPSM90703	MPSM90703
48	DISENGAGE SWITCH ASS'Y	MPPS713	MPPS713
50	START SWITCH ASS'Y	MPPS703	MPPS703
51	POWER SWITCH (ON/OFF) ASS'Y	MPPS060	MPPS060
52	PANEL, WRAP AROUND (SHEET METAL)	MPSM90701	MPSM90701
53	SCREW, 10-24 X 3/8	MHSP102438	MHSP102438
54	SCREW, 6-32 X 1/4	MHP63214ST	MHP63214ST
55	HANDLE	MPSH900	MPSH900
56	SCREW, 8-32 X 1/2	MHSP83212	MHSP83212
57	PLATE, BOTTOM (SHEET METAL)	MPSM90002	MPSM90002
58	SCREW, TRANSFORMER	MHSP83238	MHSP83238
61	BRACKET, ATTACHMENT (LOWER PLATEN ZEE)	MPSM90016	MPSM90016
62	WASHER, LOCK	MHWL516	MHWL516
63	SCREW, SHOULDER	MPSS410	MPSS410
64	TRANSFORMER	MPPT700	MPPT700
65	WASHER	MHWSAE8	MHWSAE8
66	NUT, TRANSFORMER	MHNNH832	MHNNH832
67	AIR HOSE	MPPA005	MPPA005
68	POWER CORD (USA MODEL)	MPPW161	MPPW162
68A	POWER CORD (EUROPEAN MODEL)	N/A	MPPW202
68B	POWER CORD (GREAT BRITAIN)	N/A	MPPW203
72	AIR FITTING INLET	MPPF085	MPPF085
73	RELAY, SOLID STATE	MPSR2450	MPSR2450
76	SCREW, FUSE	MHSF44038	MHSF44038
77	FUSE F1 (1 AMP 250V)	MPPF701R	MPPF701R
78	FUSE HOLDER ASSEMBLY	MPPF708	MPPF708
79	NUT, FUSE	MHNNH440	MHNNH440
101	PLATE, SKID (LEFT)	MPSM90017L	MPSM90017L
102	CLIP, CAP HOLD DOWN HANDLE	MPSC412	MPSC412
103	BOLT, HEX	MHBH5161	MHBH5161
104	SUPPORT, LOWER PLATEN ZEE	MPSS471	MPSS471
105	SCREW, SOCKET HEAD 10-32 X 1/2	MHSH103212	MHSH103212
106	NUT, HEX	MHNNH1032	MHNNH1032
111	SILICONE RUBBER PAD	MPP90144	MPP90144
112	PLATE, SKID (RIGHT)	MPSM90017	MPSM90017
113	SENSOR, RTD (2000 OHM)	MPPS210	MPPS210
114	PLATEN, UPPER W/WIRING	MPSP915	MPSP916
116	PIN, UPPER PLATEN	MHPR38112	MHPR38112
117	INSULATOR, SHROUD	MPSI089	MPSI089
118	INSULATION FIBERGLASS	MPSP249	MPSP249
119	RETAINER, TRANSFER (RIGHT)	MPSR025	MPSR025
120	SCREW, SHROUD (4 SET)	MPSS143	MPSS143
121	HEAT SHROUD	MPSS91405	MPSS91405

		MODEL	MODEL
		914	914
NO	PART NAME	115V AC	230V AC
122	RETAINER, TRANSFER (LEFT)	MPSR025L	MPSR025L
123	SCREW, 8-32 X 3/8	MHSP83238	MHSP83238
124	TEFLON BAND	MPST413	MPST413
127	GROUND WIRING WITH SCREW	MPW90140	MPW90140
A1	CLEVIS ASS'Y	MPSC919	MPSC919
A2	UPPER PLATEN ASS'Y	MPSP917	MPSP918
A3	LOWER PLATEN ASS'Y	MASP469	MASP469
A4	RETAINER, CAP HOLDDOWN (LEFT)	MPSR900L	MPSR900L
A5	RETAINER, CAP HOLDDOWN (RIGHT)	MPSR900	MPSR900
A6	RETAINER, TRANSFER ASS'Y	MASR025	MASR025



Insta Graphic Systems

13925 E. 166th Street

Cerritos, CA USA 90702-7900

Phone: 1 (562) 404.3000

Outside CA: 1 (800) 421.6971

Fax: 1 (562) 404.3010

E-mail: info@instagraph.com

Website: www.instagraph.com

**The Service Department
direct hot line numbers are:**

1 (800) 426.3609

1 (951) 943.4776

Fax: 1 (951) 443.4113

E-mail: service@instagraph.com

INSTA DESIGNS, DEVELOPS,
MANUFACTURES AND SELLS
QUALITY HEAT TRANSFER
MACHINES AND A BROAD
RANGE OF INNOVATIVE HEAT
TRANSFERS WORLDWIDE.

